

Engine	Perkins 1204F-E44TA
Gross Power	98 kW (131 hp) @ 2,100 rpm
Net Power	90 kW (121 hp) @ 2,100 rpm
Operating Weight	11,000 kg
Standard Bucket Size	1.9 m ³
Standard Breakout Force	85 kN
Standard Dump Clearance	2,680 mm

835H

WHEEL LOADER



TOUGH WORLD. TOUGH EQUIPMENT.

835H SPECIFICATIONS >>>

ENGINE

Emission Regulation	Tier 4F/ Stage IV
Make	Perkins
Model	1204F -E44TA
Gross Power	98 kW (131 hp) @ 2,100 rpm
Net Power	90 kW (121 hp) @ 2,100 rpm
Peak Torque	530 N · m @ 1,300 rpm
Displacement	4.5 L
Number of Cylinders	4
Aspiration	Turbocharged & Air-to-air intercooled

TRANSMISSION

Transmission Type	Countershaft, power shift
Torque Converter	Single stage, three elements
Maximum Travel Speed, fwd	40 km/h
Maximum Travel Speed, rev	40 km/h
Number of Speeds, fwd	4
Number of Speeds, rev	4

AXLES

Differential Front Type	Conventional
Differential Rear Type	Conventional
Axle Oscillation	±11°

STEERING

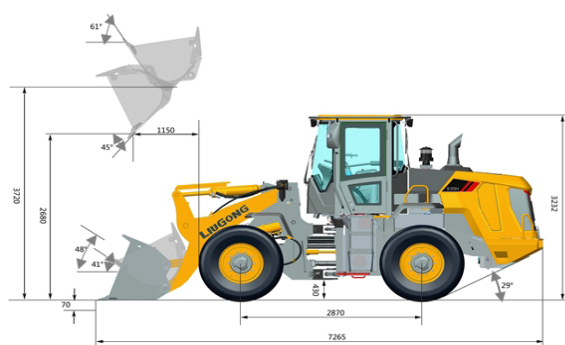
Steering Configuration	Articulated
Steering Relief Pressure	17.2 Mpa

BRAKES

Service Brake Type	Wet discs brake
Service Brake Actuation	Hydraulic
Parking Brake Type	Manual electronic control
Parking Brake Actuation	Hydraulic

HYDRAULIC SYSTEM

Main Pump Type	Piston
Main Relief Pressure	18 MPa
Raise	5.3 s
Dump Time	1.2 s
Float Down Time	3 s
Fastest Total Cycle Time	9.5 s



LOADER ARM PERFORMANCE

Tipping Load - Straight	8,100 kg
Tipping Load - Full Turn	6,900 kg
Bucket Breakout Force	85 kN
Maximum Dump Angle at Full Height	45°
Dump Clearance at Full Height Discharge	2,680 mm
Dump Reach at Full Height Discharge	1,150 mm
Maximum Hinge Pin Height	3,720 mm
Maximum Digging Depth, Bucket Level	70 mm
Bucket Rollback at Ground Level	41°
Bucket Rollback at Carry	48°
Bucket Rollback at Maximum Height	61°

BUCKET PERFORMANCE

Reference Bucket	1.9 m³
------------------	--------

DIMENSIONS

Length with Bucket Down	7,265 mm
Width Over Tires	2,300 mm
Wheelbase	2,870 mm
Wheel Tread	1,850 mm
Ground Clearance	430 mm
Turn Angle, Either Side	40°
Rear Angle of Departure	29°
Turning Radius, Outside of Tire	5,090 mm
Turning Radius, Center of Tire	4,868 mm
Turning Radius, Bucket Carry	5,750 mm

TIRES

Tire Size	17.5 R 25
-----------	-----------

OPERATING WEIGHTS

Operating Weight	11,000 kg
------------------	-----------

SERVICE CAPACITY

Fuel Tank	193 L
Engine Oil	12 L
Cooling System	40 L
Hydraulic Reservoir	120 L
Transmission and Torque Converter	40 L
Front Axle	19 L
Rear Axle	19 L
Aftertreatment DEF	25 L

